

## New 1 & 4 Channel Data Loggers

The new 100 series range of RS232 data loggers are supplied with general purpose inputs designed to accept either J, K, T, E, R, S & N type thermocouples. Just choose either the single or 4 channel model to match your application. All are complete temperature data acquisition systems including Windows data acquisition software, instruction e-manual, batteries, protective boot and the connecting RS232 communication cable. Measure temperatures with up to four thermocouples, store the measurements at a time interval to suite your application and download to a Windows computer in seconds.



### Key Features

1 or 4 channel miniature thermocouple sensor inputs.

Intuitive menu driven user interface.

High accuracy with 0.1 degree measurement resolution.

Secure data even if batteries are removed or rundown.

Multiple data logging sets up to 10,000 readings.

Real time clock and perpetual calendar.

Protective rubber boot and batteries include

PC connection via your standard RS232 port.

Inclusive RS232 communication and software download suite (cable supplied).

Review and archive all recorded data.

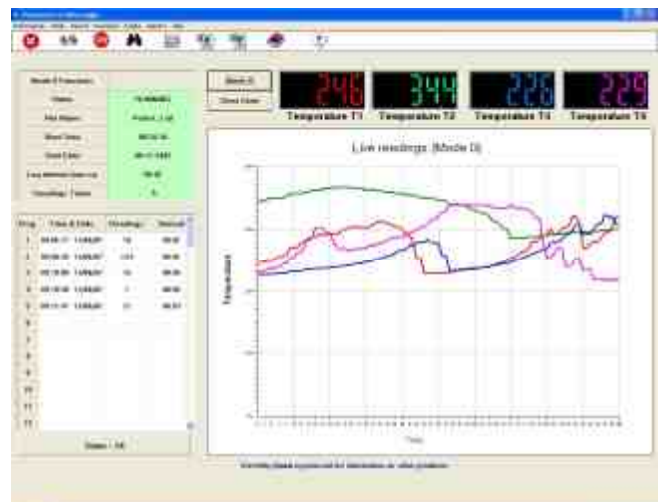
Graphical interface for ease of use.

All downloaded data saved directly into Excel format ready for your spreadsheets

T1-T2 and T3-T4 functions.

Max. and Average functions.

PC live readings and Logging facility.



## **General Specifications**

Models:	: Model 101 is single channel and Model 104 is a 4 channel system.		
Range	: K	Type	-100°C to +1300°C
	: J	Type	-100°C to +1000°C
	: E	Type	-50°C to +800°C
	: T	Type	-100°C to +400°C
	: R/S	Type	0 °C to +1700°C
	: N	Type	-100°C to +1300°C
Accuracy	: K/J/E/T Types:	±(0.1% rdg. +0.7°C)	-100°C to 1300°C
	: R/S Types:	+(0.1% rdg. +2C)	0°C to 1700°C
	N Type	+(0.1% rdg. +1.5°C)	-100°C to +1300°C
Resolution	Type	1°C	0.1°C
	K	-100°C to +1300°C	-100°C to +200°C
	J	-100°C to +1000°C	-100°C to +150°C
	E	-50°C to +800°C	-50°C to +100°C
	T	-100°C to +400°C	-100°C to +150°C
	R/S	0 °C to +1700°C	-----
	N	-100°C to +1300°C	-100°C to +150°C
Display	: Large backlight LCD multi-function display. : with temperature display in degrees Celsius, Fahrenheit or Kelvin.		
Sample Rate	: 1 reading per second.		
Logging Interval	: Selectable from 1 second to 59:59 minutes.		
Memory	: 10,000 readings held in non-volatile memory.		
Clock	: Lithium battery backed real time clock to date stamp logged data.		
Communication	: RS232 port for computer downloading data.		
Connections	: Input connections via standard miniature TC Type connectors.		
Power	: 4 x AAA size alkaline batteries (550 Hours Nominal) With auto-power off facility.		
Dimensions	: 164mm x 76mm x 32mm.		
Weight	: 415 grams including batteries (approx.).		
Software	: Windows communications and data logging software : suitable for Windows 98SE, Me, 2000 and XP.		
RS232 Cable	: 9 way min D female (Supplied) : Optional Usb Interface convertor		
Environment	: Operating - 0 to +50°C and 5 to 90% humidity non condensing. : Storage -20 to +60°C and 5 to 90% humidity non condensing.		